

# JOHNS PASS PINELLAS COUNTY, FLORIDA HYDROGRAPHIC EXAM SURVEY FY20 6, 8 AND 10-FOOT PROJECT & BORROW AREA AND EBB SHOAL

### SURVEY NOTES

- REFER TO SURVEY NO. 22-085.
- TIDAL REDUCTIONS WERE OBTAINED UTILIZING A REAL-TIME KINEMATIC (RTK) GPS AND REFERENCED TO MLLW UTILIZING A HYPACK KINEMATIC TIDE DATUM (KTD) MODEL. KTD FILE NAME: "SPC-FL-WEST-2010-12-07.KTD".
- ALL ELEVATIONS ARE BELOW THE CHART DATUM UNLESS PRECEDED BY A (+) SIGN.
- PLANE COORDINATES ARE BASED ON THE TRANSVERSE MERCATOR PROJECTION FOR THE WEST ZONE OF FLORIDA AND REFERENCED TO NORTH AMERICAN DATUM OF 1983 (NAD83).
- ALL STATIONING REFERS TO THE CENTERLINE OF THE CHANNEL.
- THIS SURVEY WAS PERFORMED USING REAL-TIME KINEMATIC (RTK) GPS POSITIONING WITH THE FOLLOWING REFERENCE BASE LOCATION:  
  
REFERENCE BASE LOCATED AT "MADERIA 1934" (PID: BBCB34)
- DEPTHS DEPICTED BY THIS SURVEY ARE REFERENCED TO MLLW, TIDAL EPOCH 1983-2001, AS REPORTED BY THE NATIONAL OCEANIC AND ATMOSPHERIC ADMINISTRATION (NOAA). A MODIFIED VERSION OF NOAA'S VDATUM MODEL WAS USED TO CALIBRATE TO THE PUBLISHED MLLW HEIGHTS OF THE BENCHMARK BELOW:  
  
NGS BENCHMARK "872 6574" USED FOR ALL CUTS (PID: DM3817)
- VERTICAL MEASUREMENTS WERE MADE USING A R2SONIC 2024 MULTI-BEAM OPERATING AT 300 KHZ AND A ROSS 835C SINGLE-BEAM OPERATING AT 28/200 KHZ. ALL SOUNDINGS SHOWN ARE IN HIGH FREQUENCY.

VESSEL	DATE OF SURVEY	CUT
SB-52	10-11 MAY 2022	EBB SHOAL & BORROW SITE
SB-52	11 MAY 2022	CUTS 1, 2A & 2B
SB-52	12 MAY 2022	CUTS 4, 5, 6 & 7
SB-52	14 MAY 2022	CUTS 2C, 3 & 4

- AIDS TO NAVIGATION WERE LOCATED DURING THIS SURVEY.
- THE INFORMATION DEPICTED ON THIS MAP REPRESENTS THE RESULTS OF SURVEYS MADE ON THE DATES INDICATED ABOVE AND CAN ONLY BE CONSIDERED AS INDICATING THE GENERAL CONDITIONS AT THAT TIME. THIS CHART IS SOLELY FOR THE DISTRIBUTION OF AVAILABLE DEPTHS AT THE TIME OF THE SURVEY.
- SURVEY ACCURACY PERFORMANCE STANDARDS, QUALITY CONTROL, AND QUALITY ASSURANCE REQUIREMENTS WERE FOLLOWED DURING THIS SURVEY IN ACCORDANCE WITH USACE EM 1110-2-1003, HYDROGRAPHIC SURVEYING, 30 NOV 2013.

LEGEND	
	MONUMENT
	LIGHTED BEACON
	GREEN DAYBEACON
	RED DAYBEACON
	RED LIGHTED BUOY
	GREEN LIGHTED BUOY
	CAN BUOY
	NUN BUOY
	TIDE STAFF
	PROJECT DEPTH

US Army Corps of Engineers  
Jacksonville District  
SAFETY ON THIS JOB  
DEPENDS ON YOU

---

DEPARTMENT OF THE ARMY  
JACKSONVILLE DISTRICT, CORPS OF ENGINEERS  
JACKSONVILLE, FLORIDA

---

JOHNS PASS  
PINELLAS COUNTY, FLORIDA  
**HYDROGRAPHIC EXAM SURVEY FY22  
6, 8 AND 10-FOOT PROJECT**  
INDEX, LOCATION AND VICINITY  
MAP

---

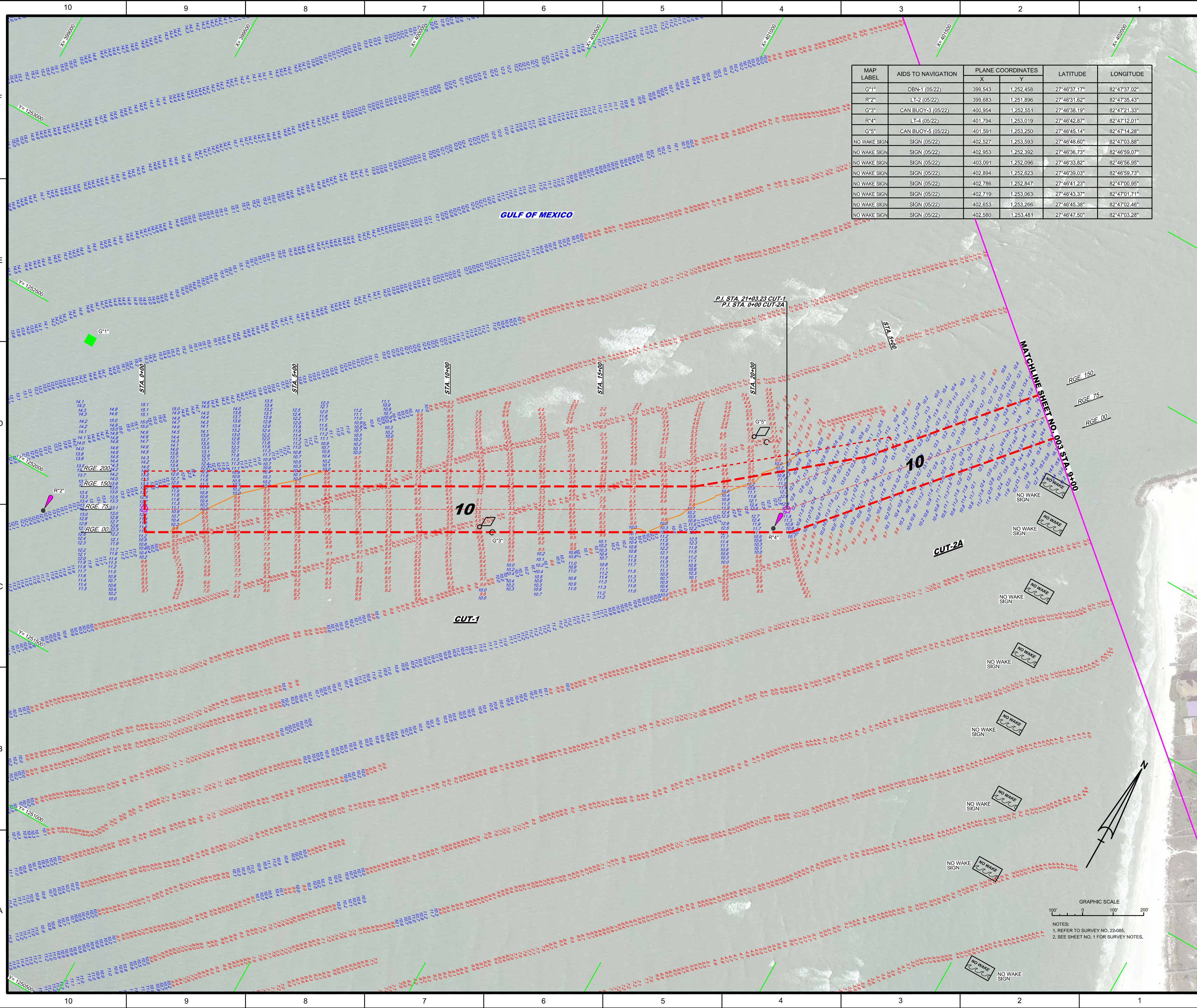
Scale: AS SHOWN

Drawing no.  
**1**

SHEET 01 OF 07



MAP LABEL	AIDS TO NAVIGATION	PLANE COORDINATES		LATITUDE	LONGITUDE
		X	Y		
G*1*	DBN-1 (05/22)	399,543	1,252,458	27°46'37.17"	82°47'37.02"
R*2*	LT-2 (05/22)	399,683	1,251,896	27°46'31.62"	82°47'35.43"
G*3*	CAN BUOY-3 (05/22)	400,954	1,252,551	27°46'38.19"	82°47'21.33"
R*4*	LT-4 (05/22)	401,794	1,253,019	27°46'42.87"	82°47'12.01"
G*5*	CAN BUOY-5 (05/22)	401,591	1,253,250	27°46'45.14"	82°47'14.28"
NO WAKE SIGN	SIGN (05/22)	402,527	1,253,593	27°46'48.60"	82°47'03.88"
NO WAKE SIGN	SIGN (05/22)	402,953	1,252,592	27°46'36.73"	82°46'59.07"
NO WAKE SIGN	SIGN (05/22)	403,091	1,252,096	27°46'33.82"	82°46'56.95"
NO WAKE SIGN	SIGN (05/22)	402,894	1,252,623	27°46'39.03"	82°46'59.73"
NO WAKE SIGN	SIGN (05/22)	402,786	1,252,847	27°46'41.23"	82°47'00.95"
NO WAKE SIGN	SIGN (05/22)	402,719	1,253,063	27°46'43.37"	82°47'01.71"
NO WAKE SIGN	SIGN (05/22)	402,653	1,253,266	27°46'45.38"	82°47'02.46"
NO WAKE SIGN	SIGN (05/22)	402,580	1,253,481	27°46'47.50"	82°47'03.28"



DEPARTMENT OF THE ARMY  
JACKSONVILLE DISTRICT, CORPS OF ENGINEERS  
JACKSONVILLE, FLORIDA

Checked by: GHR  
Designed by: WRM  
Drawn by: WRM  
In Charge: MAY 2022

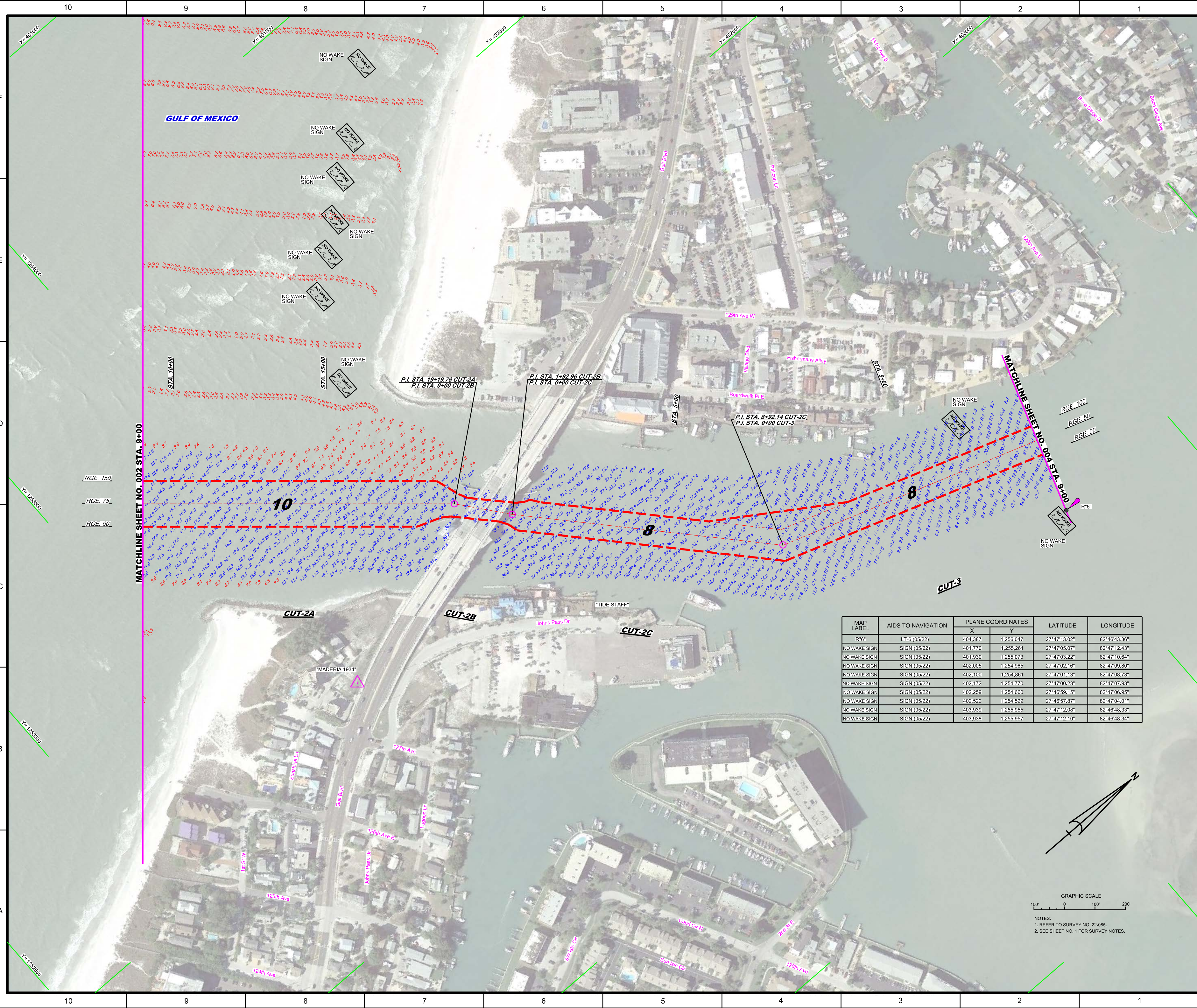
22-085A-HAN.DGN  
22-085A-SOIN.CL  
22-085A-SOIN.CL\_1005C.DGN  
22-085A-SOIN.CL\_2A-08\_1005C.DGN  
22-085A-SOIN.CL\_2A-08\_1005C.DGN  
22-085A-SOIN.CL\_2A-08\_1005C.DGN  
22-085A-SOIN.CL\_2A-08\_1005C.DGN

JOHNS PASS  
PINELAS COUNTY, FLORIDA  
**HYDROGRAPHIC EXAM SURVEY FY22**  
**6, 8 AND 10-FOOT PROJECT**  
STA. 0+00 CUT-1 THRU STA. 9+00 CUT-2A  
**PLAN**

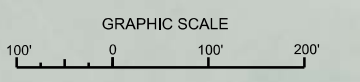
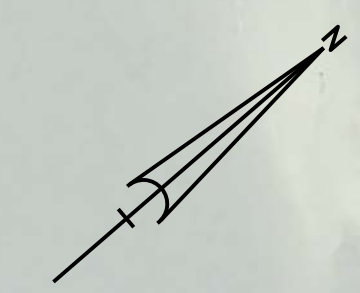
Scale: AS SHOWN  
Drawing no. **2**  
SHEET 02 OF 07

GRAPHIC SCALE  
100' 0 100' 200'  
NOTES:  
1. REFER TO SURVEY NO. 22-085.  
2. SEE SHEET NO. 1 FOR SURVEY NOTES.



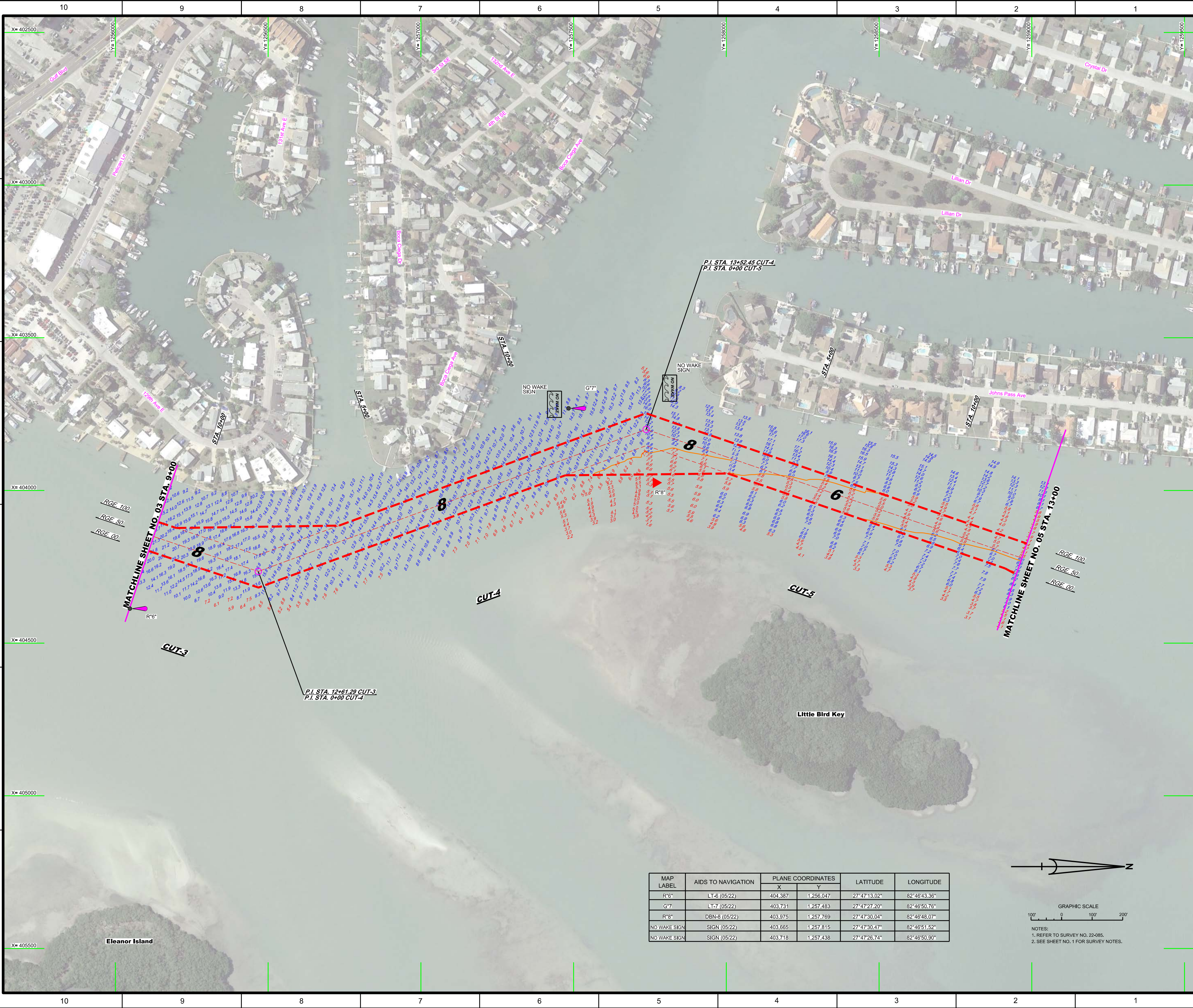


MAP LABEL	AIDS TO NAVIGATION	PLANE COORDINATES		LATITUDE	LONGITUDE
		X	Y		
R6"	LT-6 (05/22)	404,387	1,256,047	27°47'13.02"	82°46'43.36"
NO WAKE SIGN	SIGN (05/22)	401,770	1,255,261	27°47'05.07"	82°47'12.43"
NO WAKE SIGN	SIGN (05/22)	401,930	1,255,073	27°47'03.22"	82°47'10.64"
NO WAKE SIGN	SIGN (05/22)	402,005	1,254,965	27°47'02.16"	82°47'09.80"
NO WAKE SIGN	SIGN (05/22)	402,100	1,254,861	27°47'01.13"	82°47'08.73"
NO WAKE SIGN	SIGN (05/22)	402,172	1,254,770	27°47'00.23"	82°47'07.93"
NO WAKE SIGN	SIGN (05/22)	402,259	1,254,660	27°46'59.15"	82°47'06.95"
NO WAKE SIGN	SIGN (05/22)	402,522	1,254,529	27°46'57.87"	82°47'04.01"
NO WAKE SIGN	SIGN (05/22)	403,939	1,255,955	27°47'12.08"	82°46'48.33"
NO WAKE SIGN	SIGN (05/22)	403,938	1,255,957	27°47'12.10"	82°46'48.34"

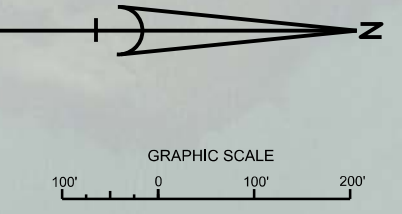


NOTES:  
1. REFER TO SURVEY NO. 22-085.  
2. SEE SHEET NO. 1 FOR SURVEY NOTES.





MAP LABEL	AIDS TO NAVIGATION	PLANE COORDINATES		LATITUDE	LONGITUDE
		X	Y		
R6"	LT-6 (05/22)	404,387	1,256,047	27°47'13.02"	82°46'43.36"
G7"	LT-7 (05/22)	403,731	1,257,483	27°47'27.20"	82°46'50.76"
R8"	DBN-8 (05/22)	403,975	1,257,769	27°47'30.04"	82°46'48.07"
NO WAKE SIGN	SIGN (05/22)	403,665	1,257,815	27°47'30.47"	82°46'51.52"
NO WAKE SIGN	SIGN (05/22)	403,718	1,257,438	27°47'26.74"	82°46'50.90"



NOTES:  
 1. REFER TO SURVEY NO. 22-085.  
 2. SEE SHEET NO. 1 FOR SURVEY NOTES.

US Army Corps of Engineers  
 Jacksonville District  
**SAFETY ON THIS JOB DEPENDS ON YOU**

---

DEPARTMENT OF THE ARMY  
 JACKSONVILLE DISTRICT, CORPS OF ENGINEERS  
 JACKSONVILLE, FLORIDA

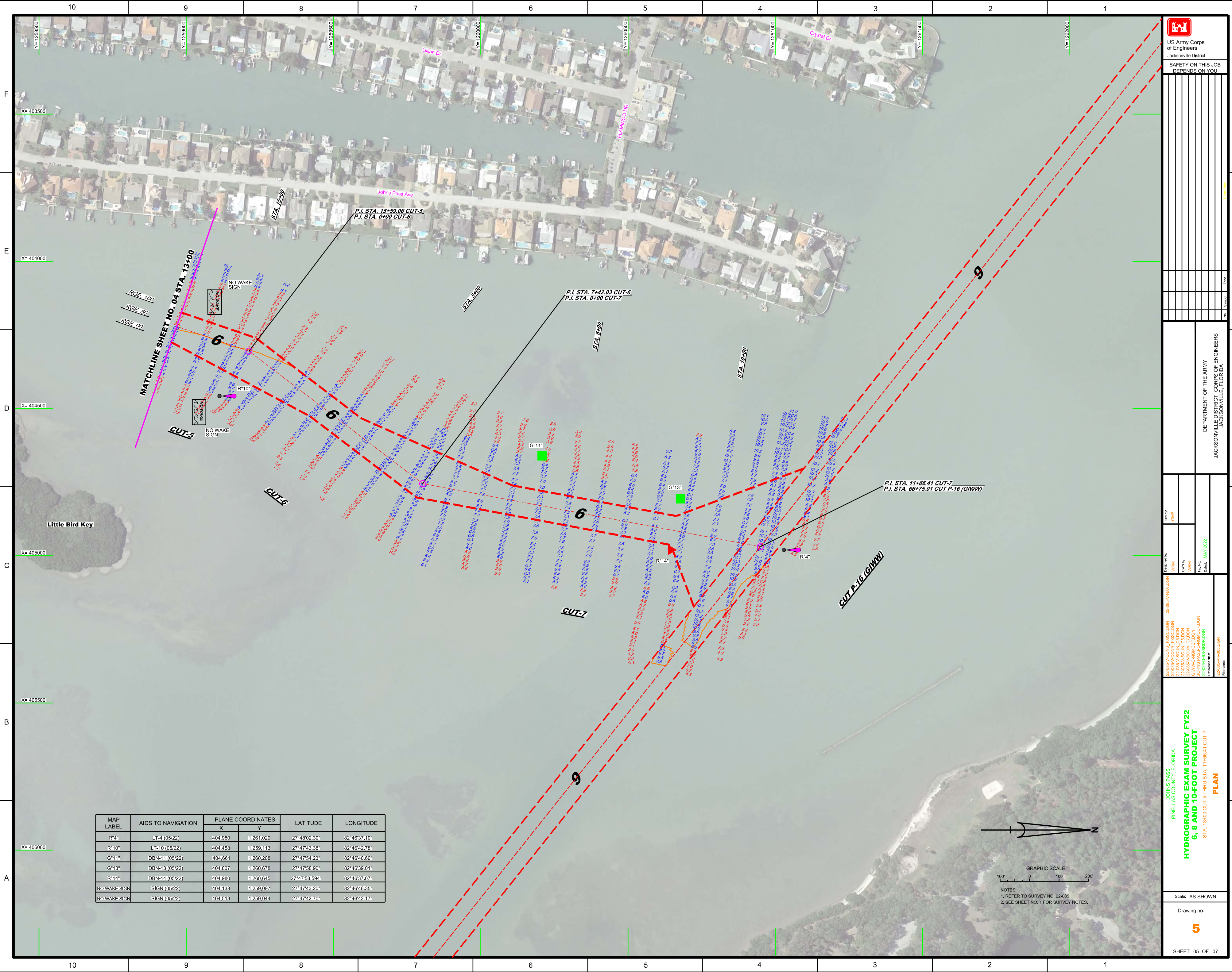
Checked by: GHR  
 Drawn by: WRM  
 Project: JOHN'S PASS-CHANGING DEPTH  
 Date: MAY 2022

---

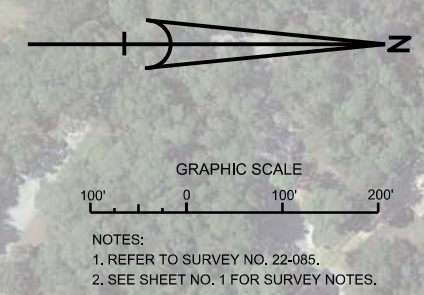
JOHN'S PASS  
 PINELAS COUNTY, FLORIDA  
**HYDROGRAPHIC EXAM SURVEY FY22  
 6, 8 AND 10-FOOT PROJECT**  
 STA. 9+00 CUT-3 THRU STA. 13+00 CUT-5  
**PLAN**


Scale: AS SHOWN  
 Drawing no. **4**  
 SHEET 04 OF 07





MAP LABEL	AIDS TO NAVIGATION	PLANE COORDINATES		LATITUDE	LONGITUDE
		X	Y		
R"4"	LT-4 (05/22)	404,980	1,261,029	27°48'02.39"	82°46'37.10"
R"10"	LT-10 (05/22)	404,458	1,259,113	27°47'43.38"	82°46'42.78"
G"11"	DBN-11 (05/22)	404,661	1,260,208	27°47'54.23"	82°46'40.60"
G"13"	DBN-13 (05/22)	404,807	1,260,678	27°47'58.90"	82°46'39.01"
R"14"	DBN-14 (05/22)	404,980	1,260,645	27°47'58.594"	82°46'37.07"
NO WAKE SIGN	SIGN (05/22)	404,138	1,259,097	27°47'43.20"	82°46'46.35"
NO WAKE SIGN	SIGN (05/22)	404,513	1,259,044	27°47'42.70"	82°46'42.17"





US Army Corps of Engineers  
Jacksonville District  
SAFETY ON THIS JOB  
DEPENDS ON YOU

---

DEPARTMENT OF THE ARMY  
JACKSONVILLE DISTRICT, CORPS OF ENGINEERS  
JACKSONVILLE, FLORIDA

---

Checked By: GHR  
Designed By: 22-085-ANW/DON  
Drawn By: WRM  
Reviewed By: WRM  
Date: MAY 2022

---

22-085-A-CONE\_1085.CDDN  
22-085-A-CONE\_1085.CDDN  
22-085-A-SOUL\_CADDN  
22-085-A-SOUL\_C7.DDN  
JOHNS PASS-CRIBWCDT.DDN  
22-085-CB-BRIDG.DDN  
Reference: 22-085-HR01.DDN

---

JOHNS PASS  
PINELAS COUNTY, FLORIDA  
**HYDROGRAPHIC EXAM SURVEY FY22  
6, 8 AND 10-FOOT PROJECT**  
STA. 13+00 CUT-5 THRU STA. 11+66.41 CUT-7  
**PLAN**

---

Scale: AS SHOWN  
Drawing no.  
**5**

---

SHEET 05 OF 07

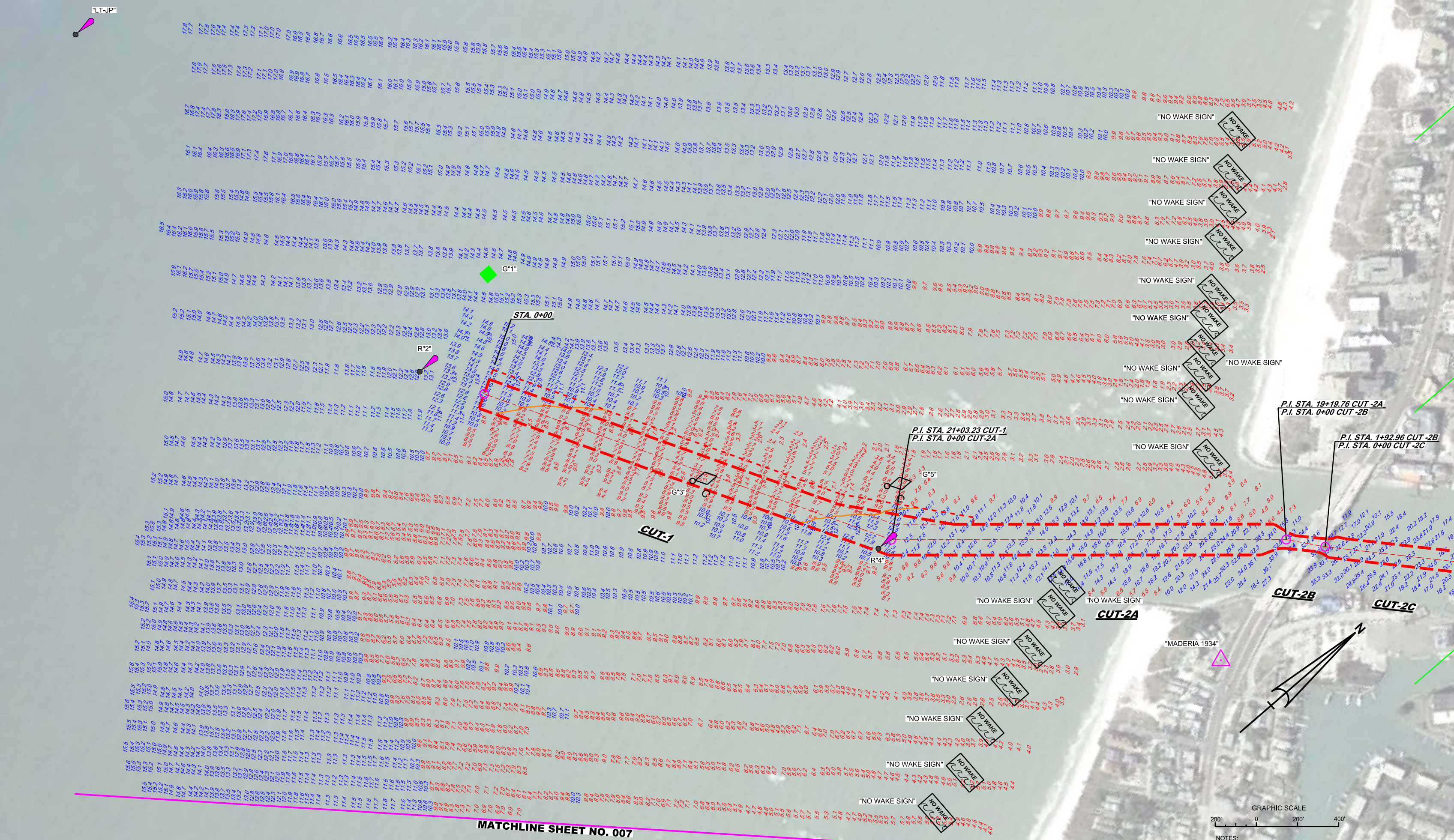


MAP LABEL	AIDS TO NAVIGATION	PLANE COORDINATES		LATITUDE	LONGITUDE
		X	Y		
G*1*	DBN-1 (05/22)	399,543	1,252,458	27°46'37.17"	82°47'37.02"
R*2*	LT-2 (05/22)	399,683	1,251,896	27°46'31.62"	82°47'35.43"
G*3*	CAN BUOY-3 (05/22)	400,954	1,252,551	27°46'38.19"	81°47'21.33"
R*4*	LT-4 (05/22)	401,794	1,253,019	27°46'42.87"	82°47'12.01"
G*5*	CAN BUOY-5 (05/22)	401,591	1,253,250	27°46'45.14"	82°47'14.28"
*LT-JP*	LT-JP (05/22)	397,347	1,251,705	27°46'29.57"	82°48'01.42"
NO WAKE SIGN	SIGN (05/22)	401,399	1,255,666	27°47'09.06"	82°47'16.59"
NO WAKE SIGN	SIGN (05/22)	401,543	1,255,518	27°47'07.55"	82°47'14.98"
NO WAKE SIGN	SIGN (05/22)	401,642	1,255,395	27°47'06.39"	82°47'13.87"
NO WAKE SIGN	SIGN (05/22)	401,770	1,255,261	27°47'05.07"	82°47'12.43"
NO WAKE SIGN	SIGN (05/22)	401,930	1,255,073	27°47'03.22"	82°47'10.64"

MAP LABEL	AIDS TO NAVIGATION	PLANE COORDINATES		LATITUDE	LONGITUDE
		X	Y		
NO WAKE SIGN	SIGN (05/22)	402,005	1,254,965	27°47'02.16"	82°47'09.80"
NO WAKE SIGN	SIGN (05/22)	402,100	1,254,861	27°47'01.13"	82°47'08.73"
NO WAKE SIGN	SIGN (05/22)	402,172	1,254,770	27°47'00.23"	82°47'07.93"
NO WAKE SIGN	SIGN (05/22)	402,259	1,254,660	27°46'59.15"	82°47'06.95"
NO WAKE SIGN	SIGN (05/22)	402,522	1,254,529	27°46'57.87"	82°47'04.01"
NO WAKE SIGN	SIGN (05/22)	402,527	1,253,593	27°46'48.60"	82°47'03.88"
NO WAKE SIGN	SIGN (05/22)	402,953	1,252,392	27°46'36.73"	82°46'58.07"
NO WAKE SIGN	SIGN (05/22)	402,894	1,252,623	27°46'39.02"	82°46'59.73"
NO WAKE SIGN	SIGN (05/22)	402,786	1,252,847	27°46'41.23"	82°47'00.95"
NO WAKE SIGN	SIGN (05/22)	402,719	1,253,063	27°46'43.37"	82°47'01.71"
NO WAKE SIGN	SIGN (05/22)	402,653	1,253,266	27°46'45.38"	82°47'02.46"

MAP LABEL	AIDS TO NAVIGATION	PLANE COORDINATES		LATITUDE	LONGITUDE
		X	Y		
NO WAKE SIGN	SIGN (05/22)	402,580	1,253,481	27°46'47.50"	82°47'03.28"


GULF OF MEXICO



MATCHLINE SHEET NO. 007

GRAPHIC SCALE  
0 200 400

NOTES:  
1. REFER TO SURVEY NO. 22-085.  
2. SEE SHEET NO. 1 FOR SURVEY NOTES.



US Army Corps of Engineers  
Jacksonville District  
SAFETY ON THIS JOB  
DEPENDS ON YOU

---

DEPARTMENT OF THE ARMY  
JACKSONVILLE DISTRICT, CORPS OF ENGINEERS  
JACKSONVILLE, FLORIDA

---

Project: **HYDROGRAPHIC EXAM SURVEY FY22**  
**6, 8 AND 10-FOOT PROJECT**

Plan: **PLAN**

Scale: AS SHOWN

Drawing no. **6**

SHEET 06 OF 07



